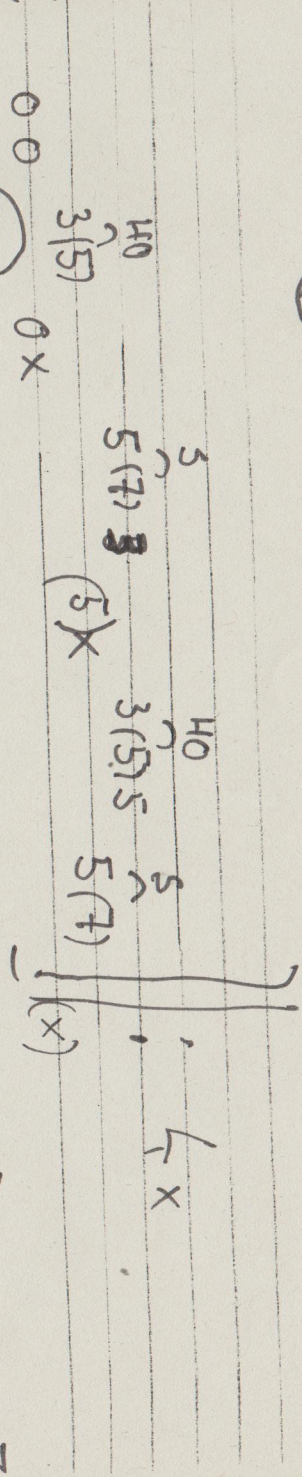
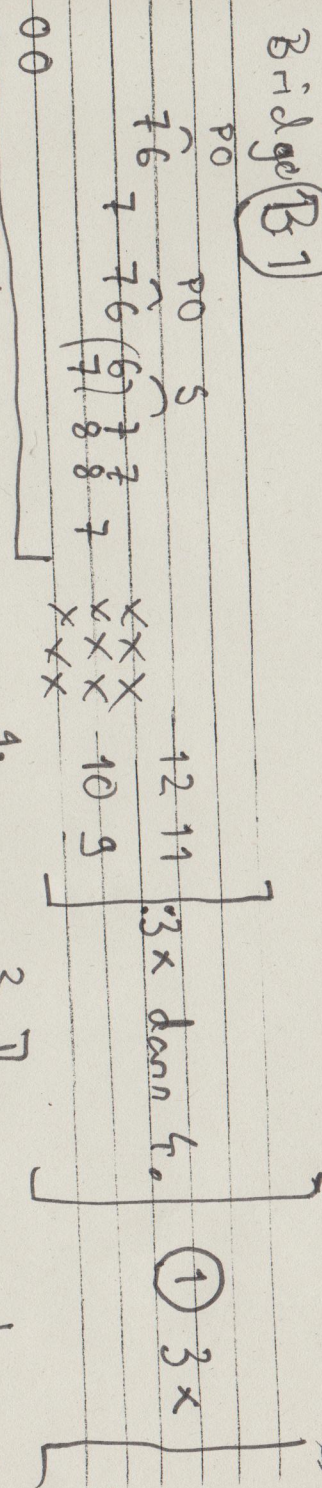


Thema ①:

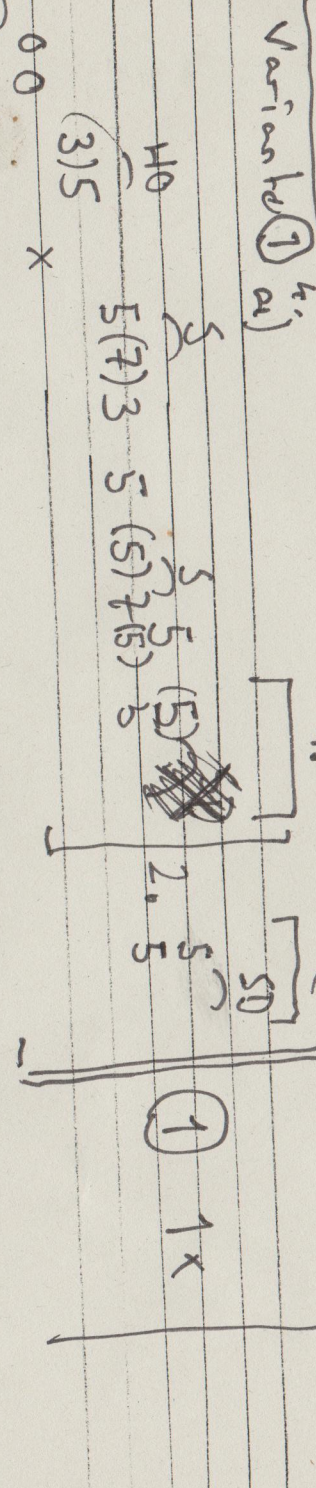
PALE C



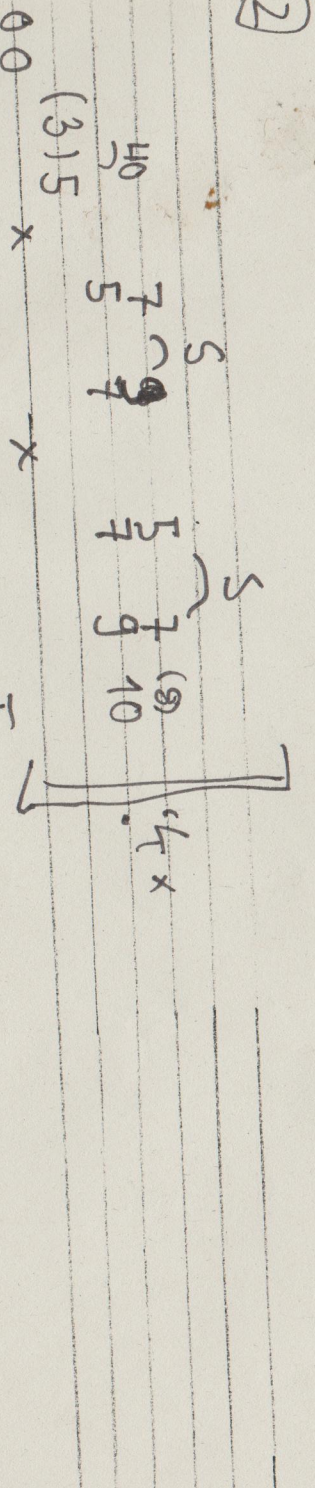
BRIDGE B1



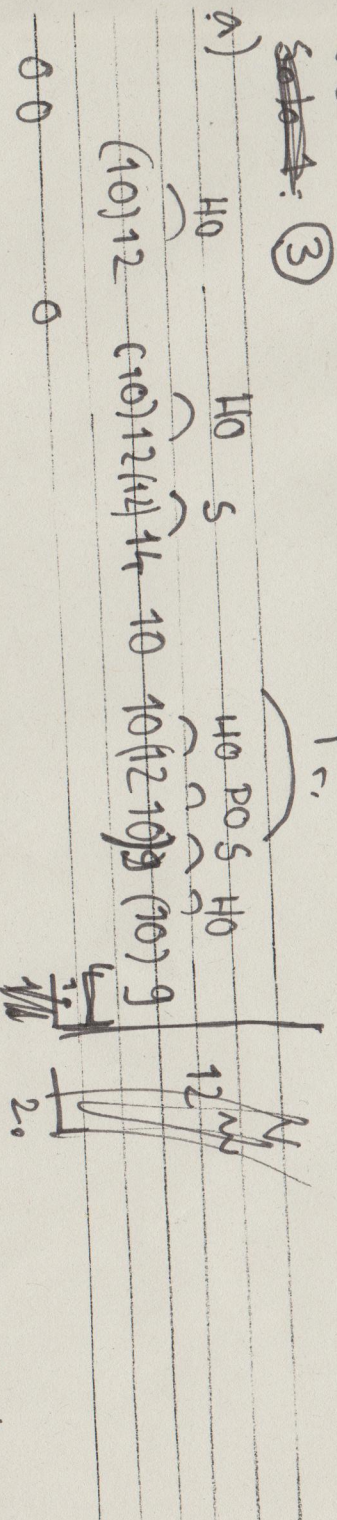
Variante ① a)



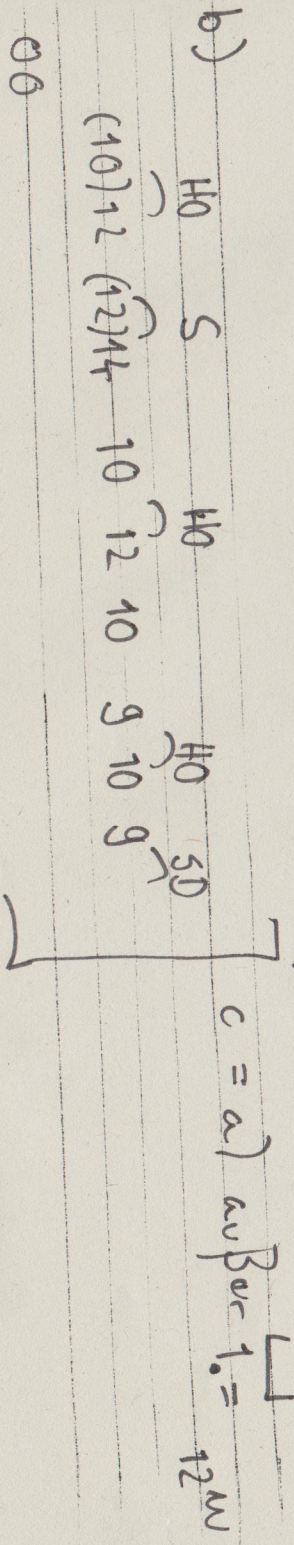
②



a)

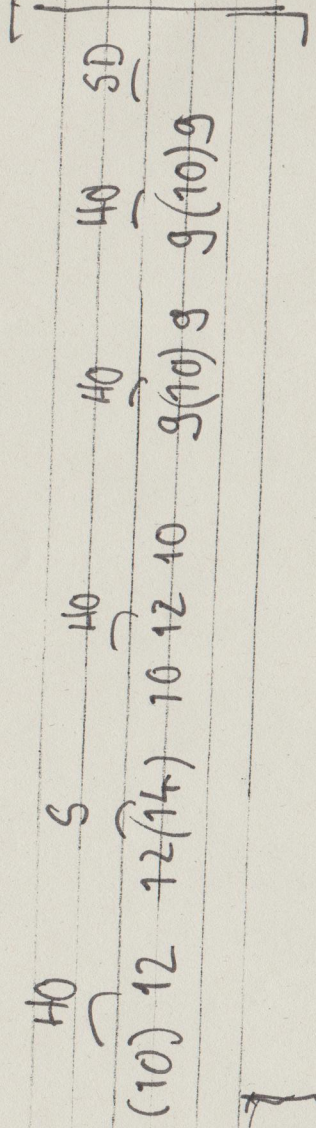


b)

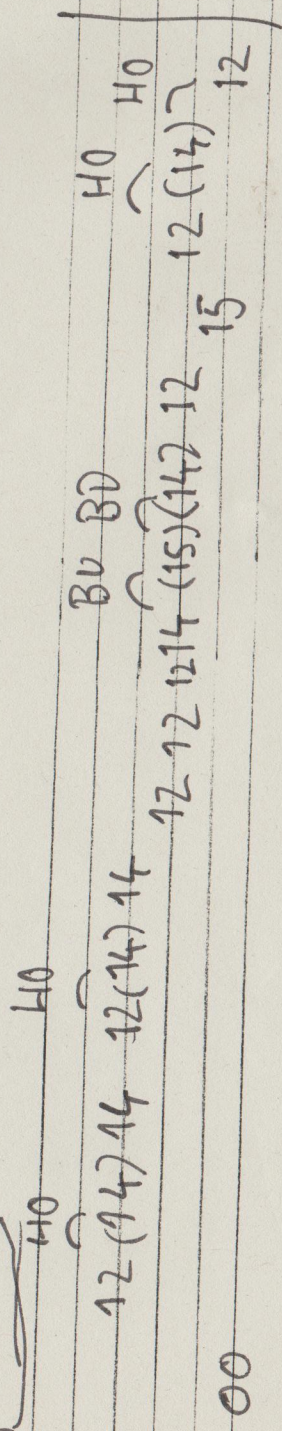


Colour Haze - Tempel 2.

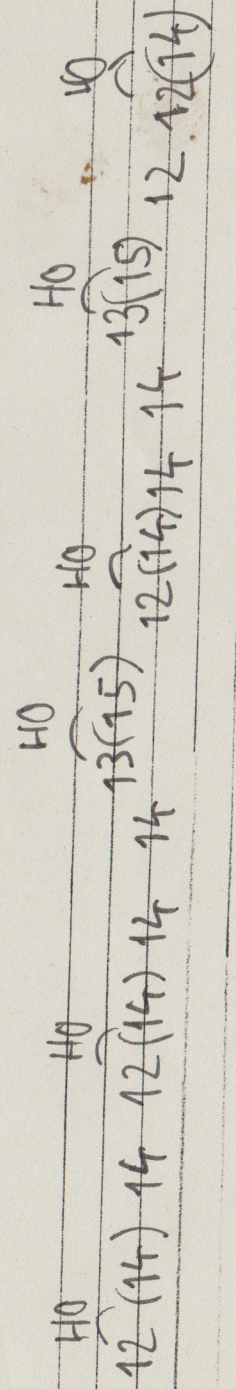
(3)
d)



Solo 1.

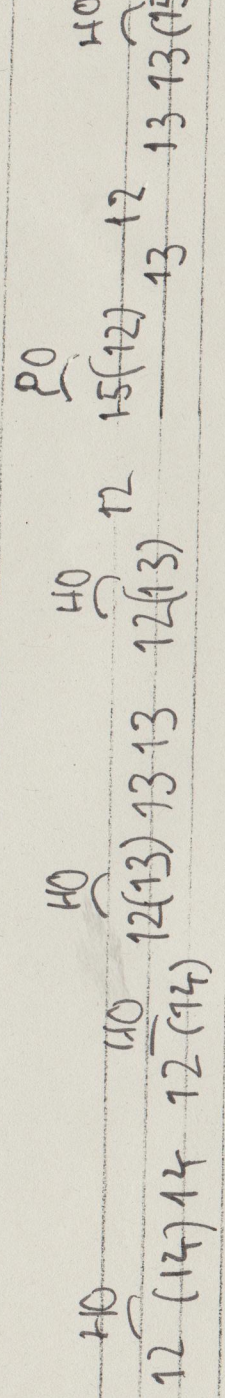


Bridge B1



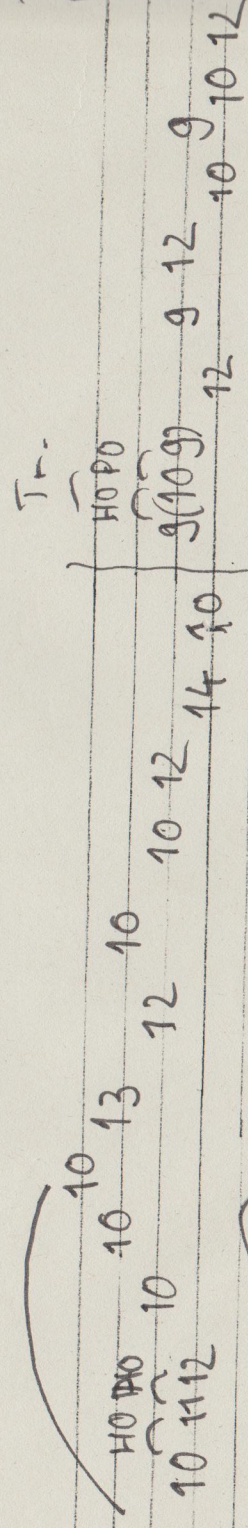
Bridge B2

0



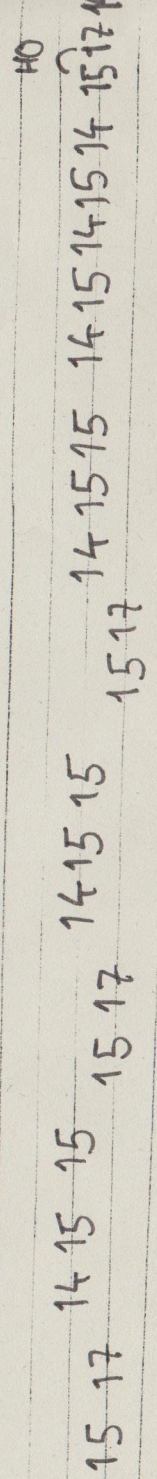
Bridge B3

0



Bridge B4

a.)



0

Bridge B2:

d b.)

14 15 15 14 15 15 15(5)(17) 14 14 15 17 14
 15 17 15 17 H0

c.)

14 (15) 14 12 14 15 12 14 15 12
 H0 13 13 13

d.)

12 14 15 12 12 12 12 (13) 12 12 14 15 12
 H0 H0 H0 13

H0

12 14 15 13 13 (15) 12 13 B H0
 14 (15) 14 12 (6) 12 (14) 12

Bridge B3

1.

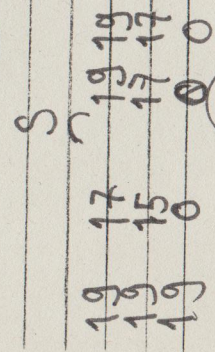
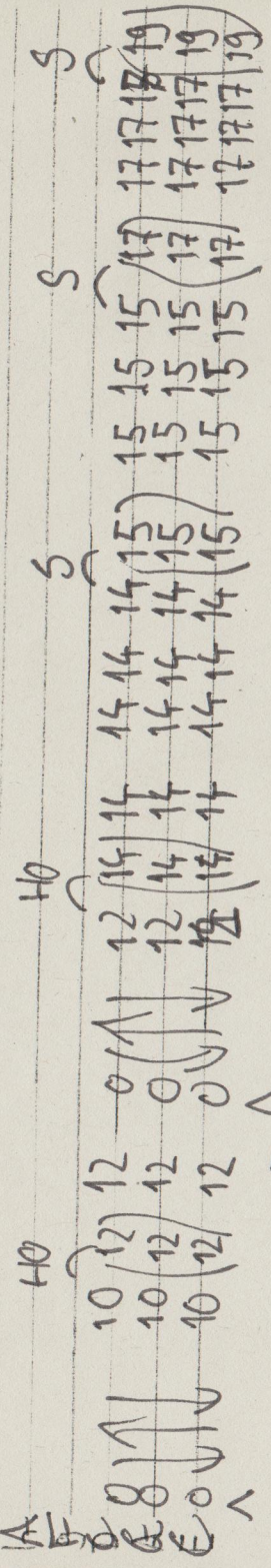
10 12 12 0 (11) 10 (12) 12 0 (11) 12 (14) 14 14 15 15
 10 12 12 0 (11) 10 12 12 0 (11) 12 (14) 14 14 15 15
 10 12 12 0 (11) 10 12 12 0 (11) 12 (14) 14 14 15 15
 H0 H0

2.

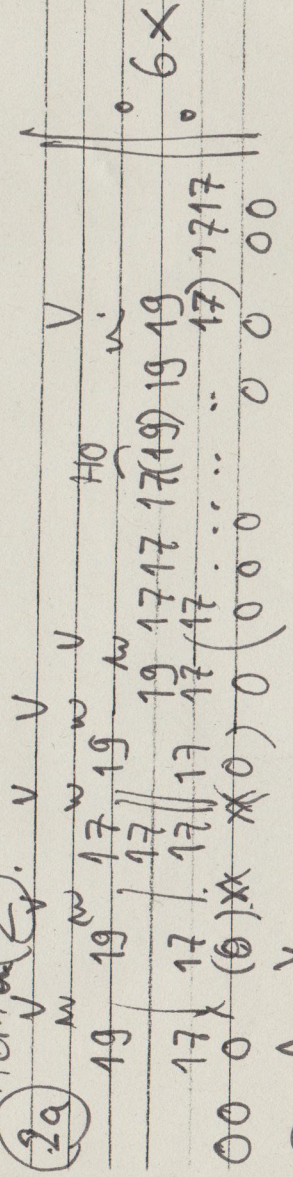
10 (12) 12 0 (11) 12 (14) 14 0 (11) 14 (15) 15 14 17 17
 10 (12) 12 0 (11) 12 (14) 14 0 (11) 14 (15) 15 14 17 17
 10 (12) 12 0 (11) 12 (14) 14 0 (11) 14 (15) 15 14 17 17
 H0 H0

B3

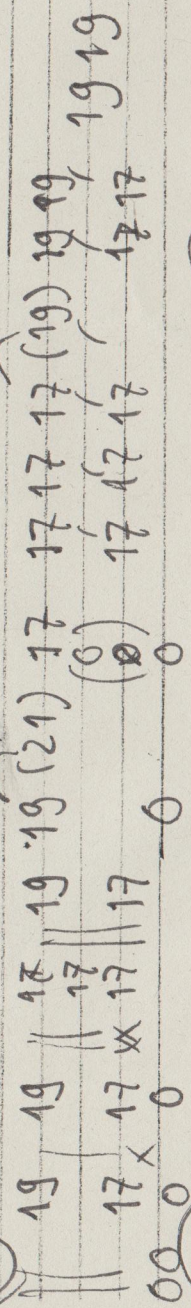
3.



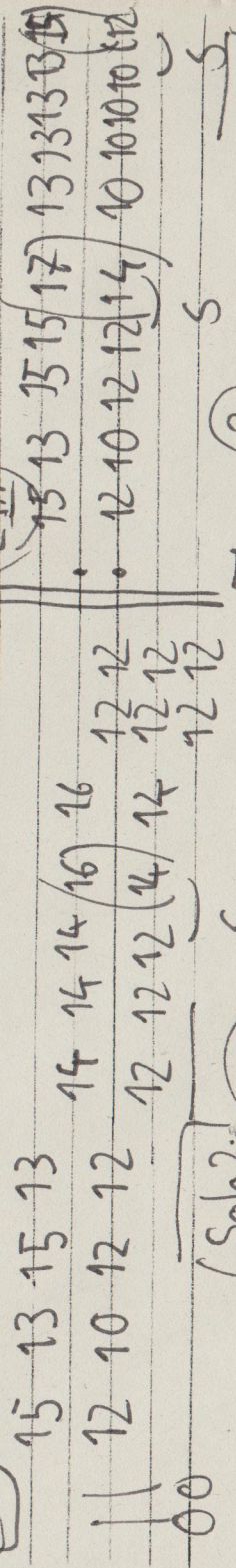
Thema 2:



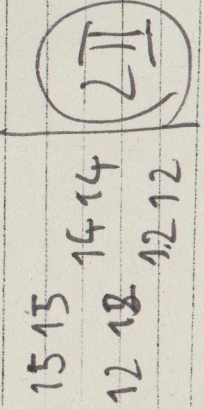
2b



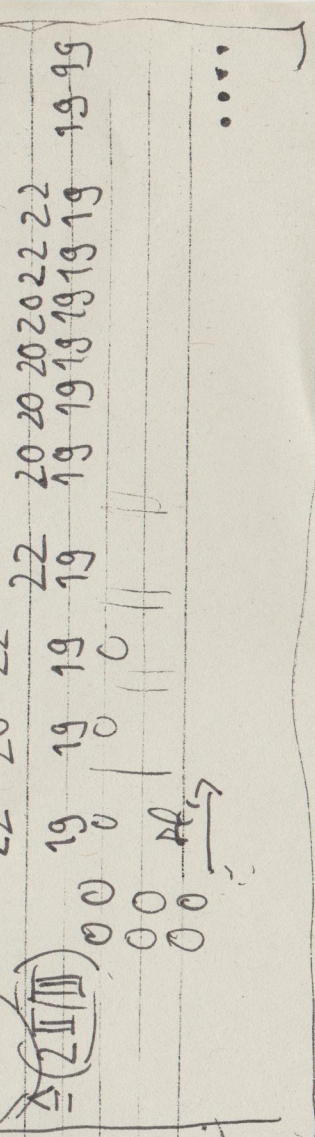
2II



Solo 2:



2IV



2II

...

...

Solo 2:

BU BU V BU V HO
 19(21) 19 17(19) 17 16(17) 16 20*21
 0 0 0 0 0 0 0
 00 00 00 00 00 00 00

BU PO PO HO 15 15 15
 16 17 17 (19) 17(16) 17 16 14 14 17 17
 0 0 0 0 0 0 0 0 0 0

HO S2a BU
 15 15 17 15(17) 14 12(14) 14 12 14 14
 0 0 0 0 0 0 0 0 0 0

S HO HO S
 14 12 14 (16) 16 14 16 16 (17) 17 12 (14) 14 12 14 14 (16) 16
 0 0 0 0 0 0 0 0 0 0 0 0 0 0 0 0

HO S2a HO S
 16 16 17 17 17 17 17 15 15 15 17 16 12 (14) 14 14 14 (16)
 0 0 0 0 0 0 0 0 0 0 0 0 0 0 0 0

HO S
 16 16 16(17) 17 17 15 15 15 17 17 17 17 20 20 20 19 19 19
 0 0 0 0 0 0 0 0 0 0 0 0 0 0 0 0 0

Thema 4

